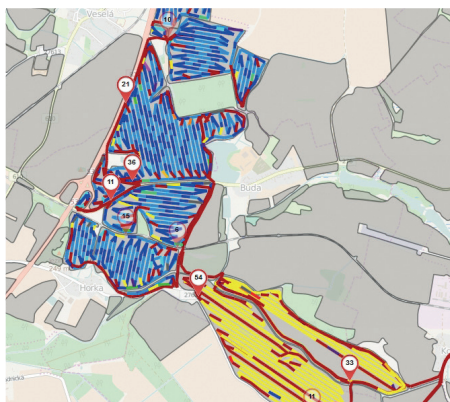


# ODOKUS 2.0

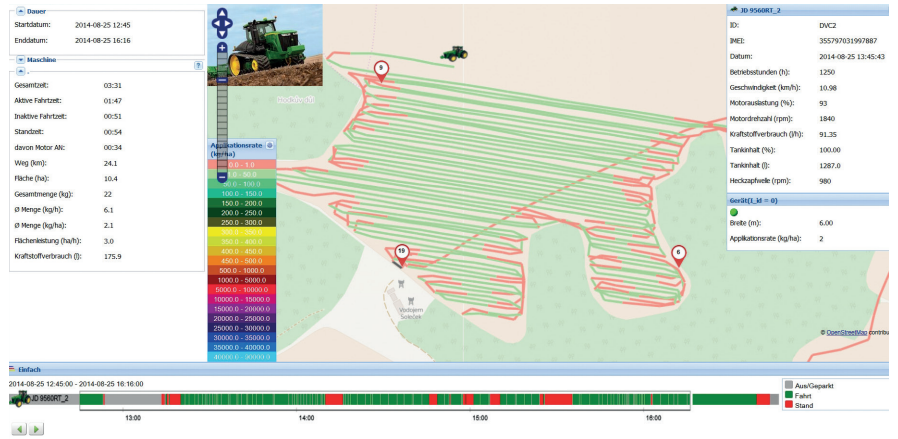
## TELEMETRY & MANAGEMENT

plan | schedule | document

on tablet PCs and smartphones, too | evaluations of field, driver and machinery | wide range of export formats

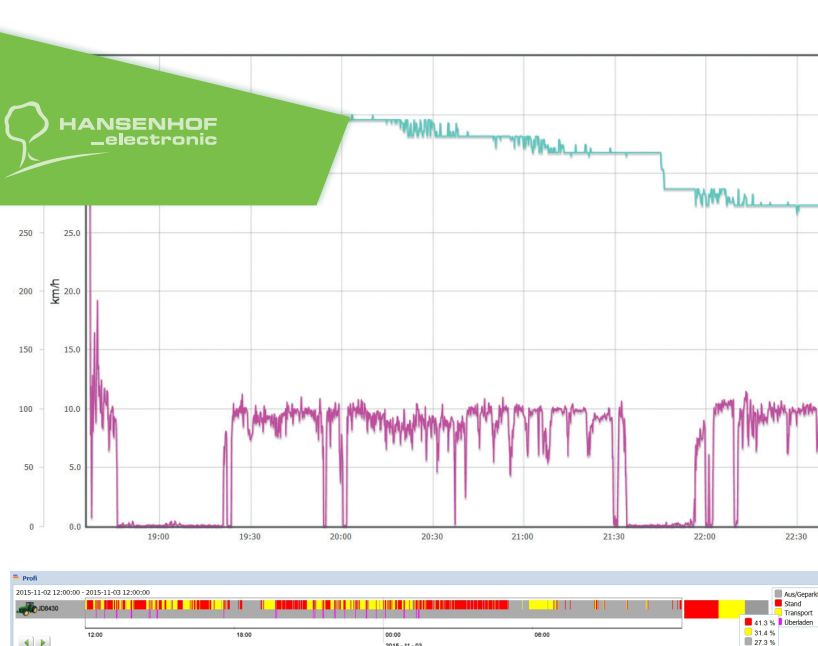
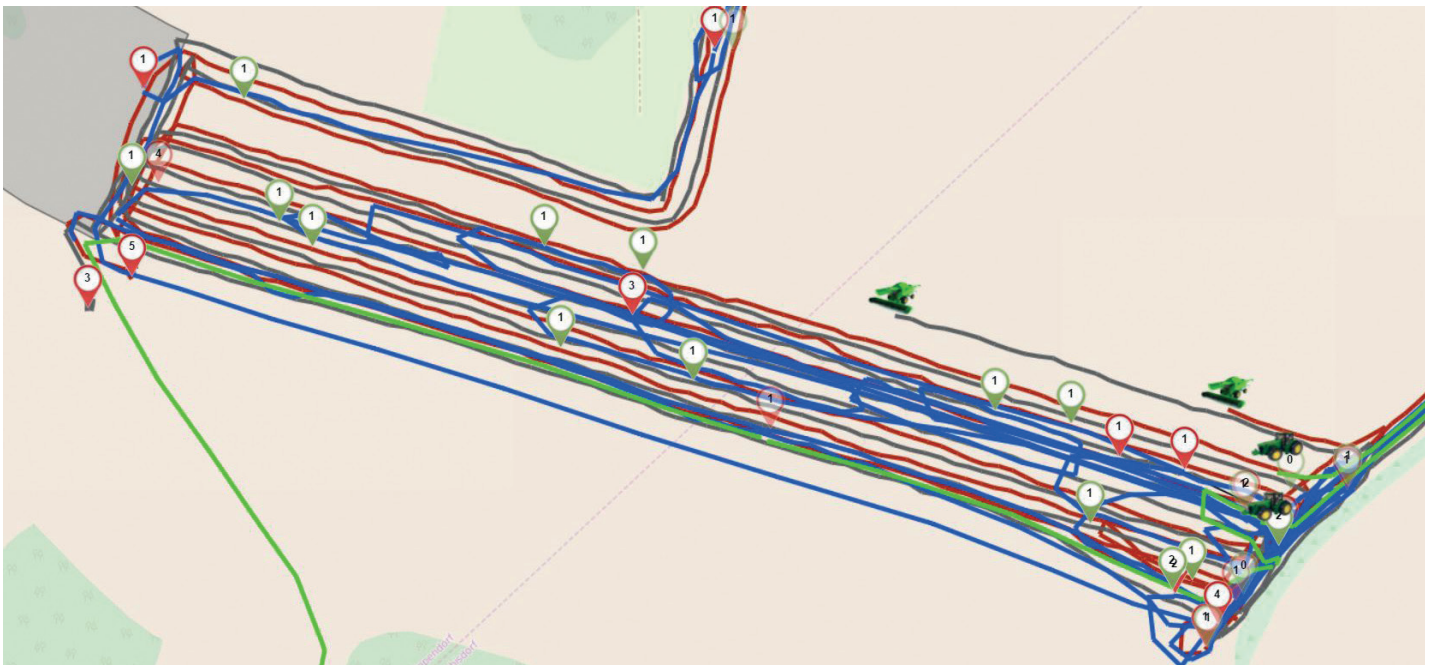


Maschine	Datum	Aktive...	Inaktiv...	Standzeit	Fläche (ha)
JD 8360RT/Maestro					
JD 8360RT/Maestro	2014-05-06	05:46	03:39	14:35	41.48
JD 8360RT/Maestro	2014-05-07		00:07	08:13	
		<b>05:46</b>	<b>03:47</b>	<b>22:48</b>	<b>41.5</b>
JD 8360RT/Rauch_Streuer					
		<b>00:00</b>	<b>00:05</b>	<b>15:36</b>	<b>0.0</b>
JD 9560RT_1					
JD 9560RT_1	2014-05-06	01:17	01:11	21:32	11.39
JD 9560RT_1	2014-05-07			01:00:00	
		<b>01:17</b>	<b>01:11</b>	<b>01:21:32</b>	<b>11.4</b>
JD 9560RT_2					
JD 9560RT_2	2014-05-06		02:53	21:07	
JD 9560RT_2	2014-05-07		00:02	23:58	
		<b>00:00</b>	<b>02:55</b>	<b>01:21:05</b>	<b>0.0</b>
PT350_neu0414/Horsch Spritze					
PT350_neu0414/Horsch S...	2014-05-06	02:37	01:58	19:24	121.14
PT350_neu0414/Horsch S...	2014-05-07	04:37	00:56	18:26	235.46
		<b>07:15</b>	<b>02:54</b>	<b>01:13:51</b>	<b>356.6</b>



Data collection is automatically done by data loggers. All data generated in real time can be seen on the ODOKUS website and on mobile terminals.

The real-time data provide all necessary information to control harvesting processes, for coordinating liquid manure logistics and for general monitoring of your fleet.



The alert system automatically sends messages if defined limit values are exceeded or fallen short of (operating life, velocity, geo-fencing, machine and device parameters).

Graphical and tabular reports are created with just a few clicks and provide a quick visual overview.

Various reports for evaluation, as well as electronic logbook, refuelling log and fieldbook provide you a reliable overview of the entire enterprise.



## LOGISTICS OPTIMIZATION

- transport routes
- standing times
- shift change
- use of machinery
- order planning

## COSTS / BILLING

- machinery, employees
- third-party vehicles
- equipment costs
- machine cooperatives
- pricing
- contribution margins
- profitability assessments

Exports allow data transfer to the payroll department, field data management system, 1C and Repro.

**Dauer**

Startdatum: 2014-08-14 07:45  
Enddatum: 2014-08-14 18:45

**Maschine**

**Guelle-Fass**

Gesamtzeit: 11:00  
Aktive Fahrtzeit: 02:13  
Inaktive Fahrtzeit: 03:19  
Standzeit: 05:28  
davon Motor AN: 04:06  
Weg (km): 62.5  
Fläche (ha): 17.9  
Gesamtmenge (m³): 432  
Ø Menge (m³/h): 39.3  
Ø Menge (m³/ha): 24.1  
Flächenleistung (ha/h): 1.6  
Kraftstoffverbrauch (l): 193.1

**Planung – Aufträge – Maßnahmen**

Id	Bezeichnung	Schlag/Gruppe	Fläche (ha)	Datum	Fruchtart	Arbeitsart	Bemerkung	Menge
Auftrag neu 1								
30	Am Wald 2.N	Am Wald	12,8	14.04.2015	Winterweizen	Düngung	2. N-Gabe, nach Sensor	
29	Talsperre Insekt	Talsperre	58,3	11.04.2015	Winterraps	Spritzen	Insektizid	
28	Richters Stück Fungi	Richters Stück	17,7	11.04.2015	Wintergerste	Spritzen	Fungizid	
27	Wintergerste 2.N	Wintergerste (Gruppe)	367,9	07.04.2015	Wintergerste	Düngung	2. N-Gabe, nach Sensor	
26	Winterraps 2.N	Winterraps (Gruppe)	421,5	09.04.2015	Winterraps	Düngung	2. N-Gabe	75 kg/ha
25	Hintere Ecke Sä	Hintere Ecke	5,2	02.04.2015	Hafer	Aussaat		350 Kö/m²

Maschine	Datum	Arbeiter	Gesamtzeit	Aktive...	Inaktiv...	Standzeit	Weg (km)	Fläche (ha)	Kraftstoff (l)	Gesamt
<b>JD 8360RT/Maestro</b>										
JD 8360RT/Maestro	2014-05-06	-	01:00:00	05:46	03:39	14:35	72.3	41.48	363.2	3112.54 TKö
JD 8360RT/Maestro	2014-05-07	-	08:20		00:07	08:13	1.1		1.1	-
			<b>01:08:20</b>	<b>05:46</b>	<b>03:47</b>	<b>22:48</b>	<b>73.4</b>	<b>41.5</b>	<b>364.4</b>	<b>3112.54 TKö</b>
<b>JD 8360RT/Rauch_Streuer</b>										
			<b>15:40</b>	<b>00:00</b>	<b>00:05</b>	<b>15:36</b>	<b>1.6</b>	<b>0.0</b>	<b>0.9</b>	-
<b>JD 9560RT_1</b>										
			<b>02:00:00</b>	<b>01:17</b>	<b>01:11</b>	<b>01:21:32</b>	<b>16.6</b>	<b>11.4</b>	<b>145.7</b>	-
<b>JD 9560RT_2</b>										
JD 9560RT_2	2014-05-06	-	01:00:00	02:53	21:07	36.9			144.0	-
JD 9560RT_2	2014-05-07	-	01:00:00	00:02	23:58	0.3			0.7	-
			<b>02:00:00</b>	<b>00:00</b>	<b>02:55</b>	<b>01:21:05</b>	<b>37.2</b>	<b>0.0</b>	<b>144.7</b>	-
<b>PT350_neu0414/Horsch Spritze</b>										
PT350_neu0414/Horsch Spritze	2014-05-06	-	01:00:00	02:37	01:58	19:24	76.4	121.14	131.9	22537.11 l
PT350_neu0414/Horsch Spritze	2014-05-07	-	01:00:00	04:37	00:56	18:26	103.5	235.46	142.4	24439.46 l

# COMPONENTS

## POSITION RECORDING

time  
field



## MACHINE DATA RECORDING

engine data  
operation data  
output  
via ISOBUS/CAN, sensors



## DEVICE DATA RECORDING

working width  
workstate  
application rate  
sensor data (NDVI,  
working depth)



## EMPLOYEES DATA RECORDING

working hours  
machine

